

***Eternal Reverie:***

**Olive Diamond, Charlotte Edey, Landon Bailey Higgins, Alyssa Klauer, Sarah Lee**

**Exhibition Dates:** January 12 – March 4, 2023

Opening: January 12th, @6PM - 8PM

1969 Gallery presents *Eternal Reverie*, a group exhibition featuring the works of Olive Diamond, Charlotte Edey, Landon Bailey Higgins, Alyssa Klauer, and Sarah Lee.

*Eternal Reverie* refers to a period of endless daydreaming; of a desire to exist within a fantasyland, only accessible through another plane of thought. Walking the line between abstraction and realism, these artists are all penetrating new terrain with the creation of uncanny scenes.



Sarah Lee, *Night breeze*, 2023, oil on canvas, 60h x 70w inches

Taking inspiration from her Jewish heritage, Olive Diamond creates fantastical landscapes, inspired by the Kabbalah's idea of losing oneself in order to discover the knowledge of that which one wishes to understand. Her painting, *Belt of Venus*, mixes a dreamy, imagined landscape with the real phenomenon of the Belt of Venus — a pinkish glow in the sky visible shortly before sunrise or after sunset. Similarly, Sarah Lee creates dreamy landscapes, often taking place in the evening with a strong blue palette. Lee's paintings are poetic, using the light of natural forces, such as falling stars, moons and lightning to build an atmosphere that is simultaneously charged and peaceful. This can be seen in *Night breeze*, with the moon shining through a dark forest.

Landon Bailey Higgins is known for his vibrant figurative paintings depicting luminous gummy bears in narrative scenes, which function as a vehicle for self-identification and exploration of light. Like Olive Diamond and Sarah Lee, Higgins's paintings portray otherworldly landscapes, with the addition of this figurative element. In *Past and Present*, an orange gummy bear looks longingly out of a window and up to a crescent moon, encapsulating a feeling of both loneliness and hope. This painting is also a direct reference to Augustus Egg's *Past and Present, No. 2 - Prayer*, which depicts a family grieving the death of their patriarch after he dies of heartbreak from infidelity.

Alyssa Klauer's paintings use vibrant colors and a transparent layering process to create ghostly scenes, which contrast the idea of an internal dream state vs. an external reality. *Vampire Fantasy* relies on a heavily saturated red to create a circular composition, carrying you from the background figure's bloodthirsty eyes to the flowers in the foreground, being drained of all signs of life. Charlotte Edey uses more subdued colors to express equally haunting and erotic scenes. In her works on paper, Edey illustrates smooth figurative shapes on top of simplified backgrounds. In *Finger Coils*, a hand with sharp, elongated fingers toys with a long coiled cord draping downwards.

*Eternal Reverie* presents otherworldly works that culminate to create a highly seductive reality portrayed through the artists' shared use of luminous, saturated colors and exaggerated forms.

For inquiries, please contact:

Amanda Barker ([amanda@1969gallery.com](mailto:amanda@1969gallery.com))



**Olive Diamond**  
*Belt of Venus, 2022*  
oil on linen  
36h x 48w inches



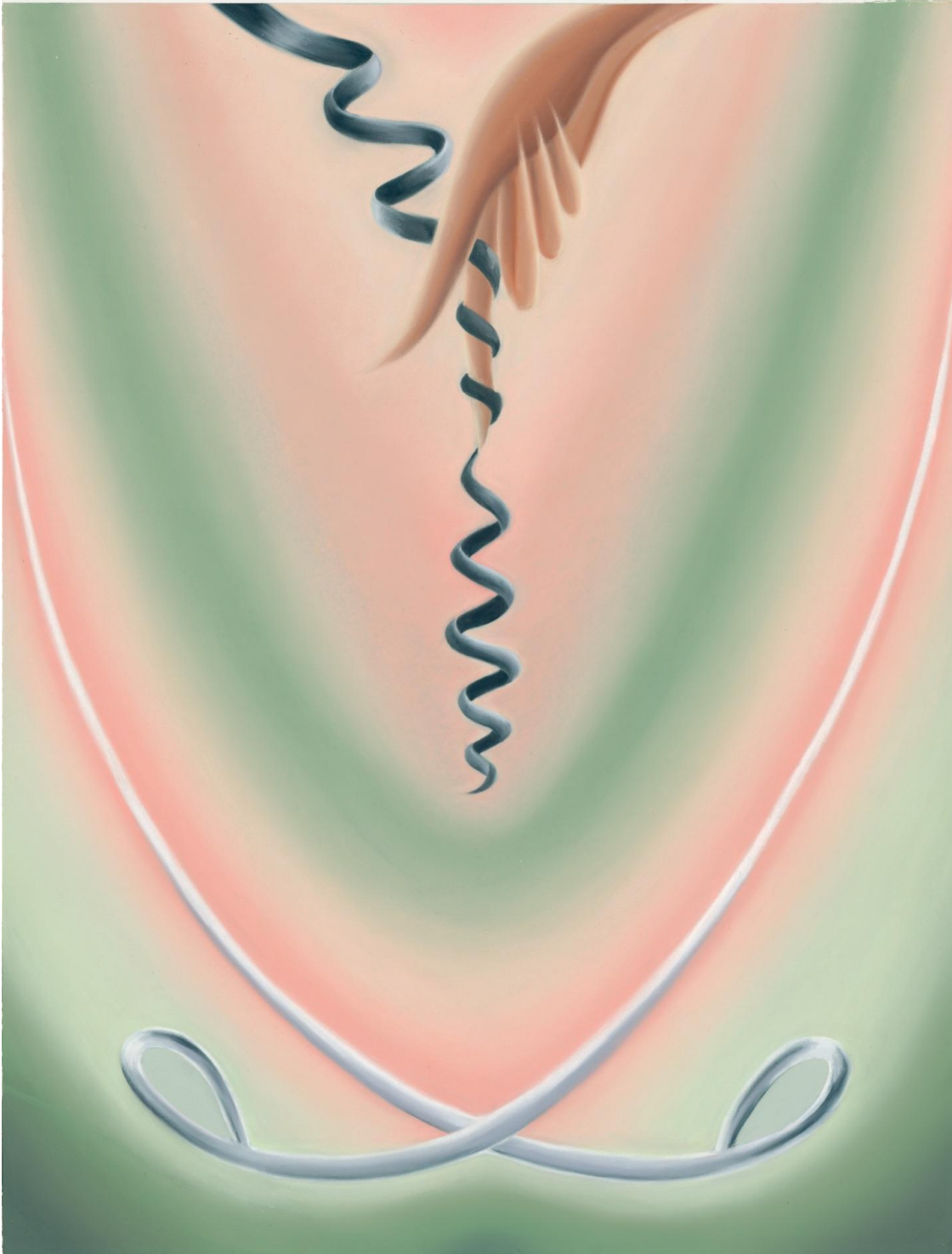


**Olive Diamond**  
*Red Lake, 2022*  
oil on canvas  
40h x 30w inches





**Olive Diamond**  
*Lunar Cataclysm, 2022*  
oil on canvas  
20h x 24w inches



**Charlotte Edey**  
*Finger Coils, 2022*  
soft pastel on paper  
25 1/2h x 19 1/2w inches





**Charlotte Edey**

*Cutting Ties, 2022*

soft pastel on paper in found cedar frame

13 1/2h x 11w inches



**Landon Bailey Higgins**  
*Quiet Reflection, 2023*  
oil on linen  
52h x 73w inches





**Landon Bailey Higgins**  
*Sun and Moon, 2023*  
oil on canvas  
50h x 42w inches





**Landon Bailey Higgins**  
*Past and Present, 2023*  
oil on linen  
50h x 42w inches





**Landon Bailey Higgins**  
*Golden Knob*, 2023  
oil on linen  
14h x 11w inches





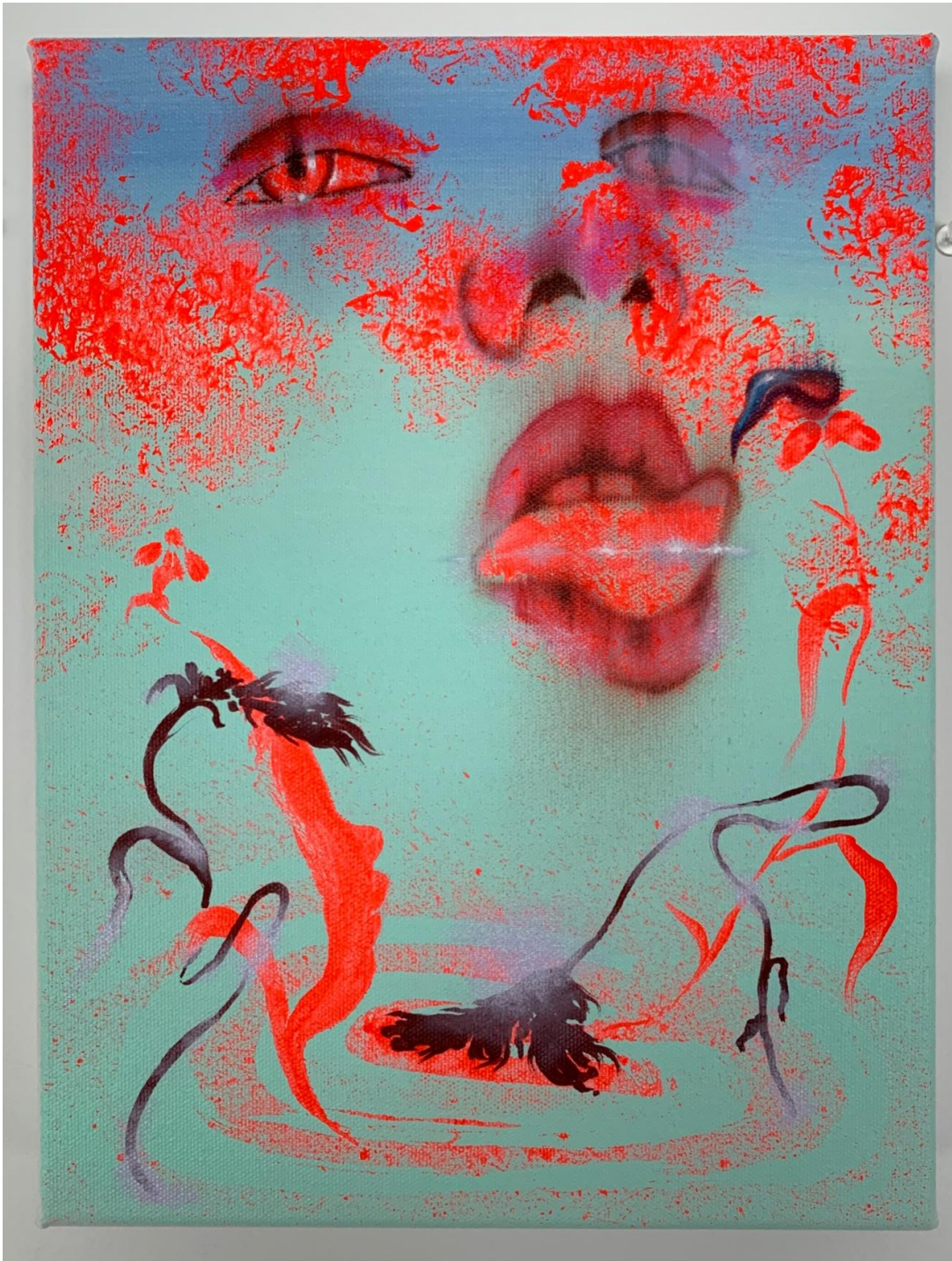
**Alyssa Klauer**

*Eulogy for Wasted Prime II, 2022*

acrylic and oil on canvas

14h x 11w inches





**Alyssa Klauer**  
*Vampire Fantasy*, 2022  
acrylic and oil on canvas  
12h x 9w inches





**Sarah Lee**  
*Night breeze, 2023*  
oil on canvas  
60h x 70w inches



**Olive Diamond** (b. 1998, Los Angeles) lives and works in Los Angeles, CA. She graduated from Rhode Island School of Design in 2021 with a BFA in Painting and Ceramics. Diamond has been awarded the 2021 Florence Leif Award and the 2020 Anderson Ranch Fellowship. Her work has been exhibited at the Fall River Museum of Contemporary Art, Fall River, Massachusetts (2021), Loyal Gallery, Stockholm, Sweden (2022), the Japanese American Cultural Community Centre, Los Angeles, California (2022), Sow and Tailor Gallery, Los Angeles, California (2021), Unit London, London, United Kingdom (2022), and South Willard Gallery, Los Angeles, California (2022). Additionally, she has been featured in publications such as Flaunt Magazine, Architectural Digest, Surface Magazine, Artsy, and Artnet.

**Charlotte Edey** (b.1992, Britain) lives and works in London. Edey graduated from The Royal Drawing School in 2021 and Chelsea School of Art and Design in 2011. Solo exhibitions include; *Echolocation*, Public Gallery, London, UK (2019); *Artist of the Day*, Flowers Gallery, London, UK (2018). Group exhibitions include; *Abracadabra*, Alma Zevi, London, UK (2021); *Supermarket*, Design Museum, London, UK, (2021); *From Cellar to Garret*, South Parade, London, UK (2021); *Small is Beautiful*, Flowers Gallery, London, UK (2020); *Transatlantico*, MANA Contemporary, Jersey City, British Isles (2020); *Ancient Deities*, Arusha Gallery, Edinburgh, UK (2020); *No Time Like The Present*, Public Gallery, London, UK (2020); *This Tragedy with Ginny on Frederick*, Fonda, Leipzig, Germany (2020); *The Great Women Artists x Palazzo Monti*, Brescia, Italy (2019); *ING Discerning Eye*, Mall Galleries, London, UK, (2019); *Motherline*, Flowers Gallery, London, UK (2019); *Subversize Stitch*, TJ Boulting, London, UK (2019); *Every Thing*, Assembly Point, London, UK, (2018); *In the Company Of*, TJ Boulting, London, UK (2018); *The Great Women Artists*, Mother London, London, UK (2017).

**Landon Bailey Higgins** (b. 1996, Huntsville, Alabama) is a painter based in Brooklyn, NY. Higgins received a BA from Hunter College and an AAS from Pratt Institute. Landon's work has recently been shown with Gallery Poulsen and Hesse Flatow. Landon has been featured in Hyperallergic. He is currently represented by Gallery Poulsen in Copenhagen, Denmark.

**Alyssa Klauer** (b. 1995, New Orleans, Louisiana) is a painter based between New Haven, Connecticut and Brooklyn, New York. She received her BFA from the Maryland Institute College of Art in 2017 and her MFA from the Cranbrook Academy of Art in 2019. Klauer has been awarded the 2021 TOY Foundation Fellowship alongside the 2021-2022 NXTHVN Studio Fellowship. She has attended residencies at the Vermont Studio Center, Grin City Collective, The Chautauqua Institution, and NYU Steinhardt. Klauer's work has been written about in *New American Paintings*, *Two Coats of Paint*, and *The New York Times*. Her work deals with themes of magic, transformation and dreams through the lens of second queer adolescence.

**Sarah Lee** (born 1988 in Seoul) is an artist based in New York City. She received her BFA from the School of the Art Institute of Chicago in 2011 and her MFA from the same institution in 2017. Additionally, Lee studied painting at Seoul National University in 2014. Her work has been exhibited in various galleries including PMAM in London, 1969 Gallery in New York, Bill Brady in Los Angeles, Anat Ebgi in Los Angeles, Carl Kostyal in Milan, ATM Gallery in New York, and Galerie Hussenot in Paris.





**Additional Available**



**Landon Bailey Higgins**

*Collision, 2023*

oil on linen

52h x 65w inches





**Landon Bailey Higgins**

*Parasite*, 2023

oil on linen

32h x 30w inches





**Alyssa Klauer**  
*Flower Alchemy, 2022*  
acrylic and oil on canvas  
7h x 5w inches